

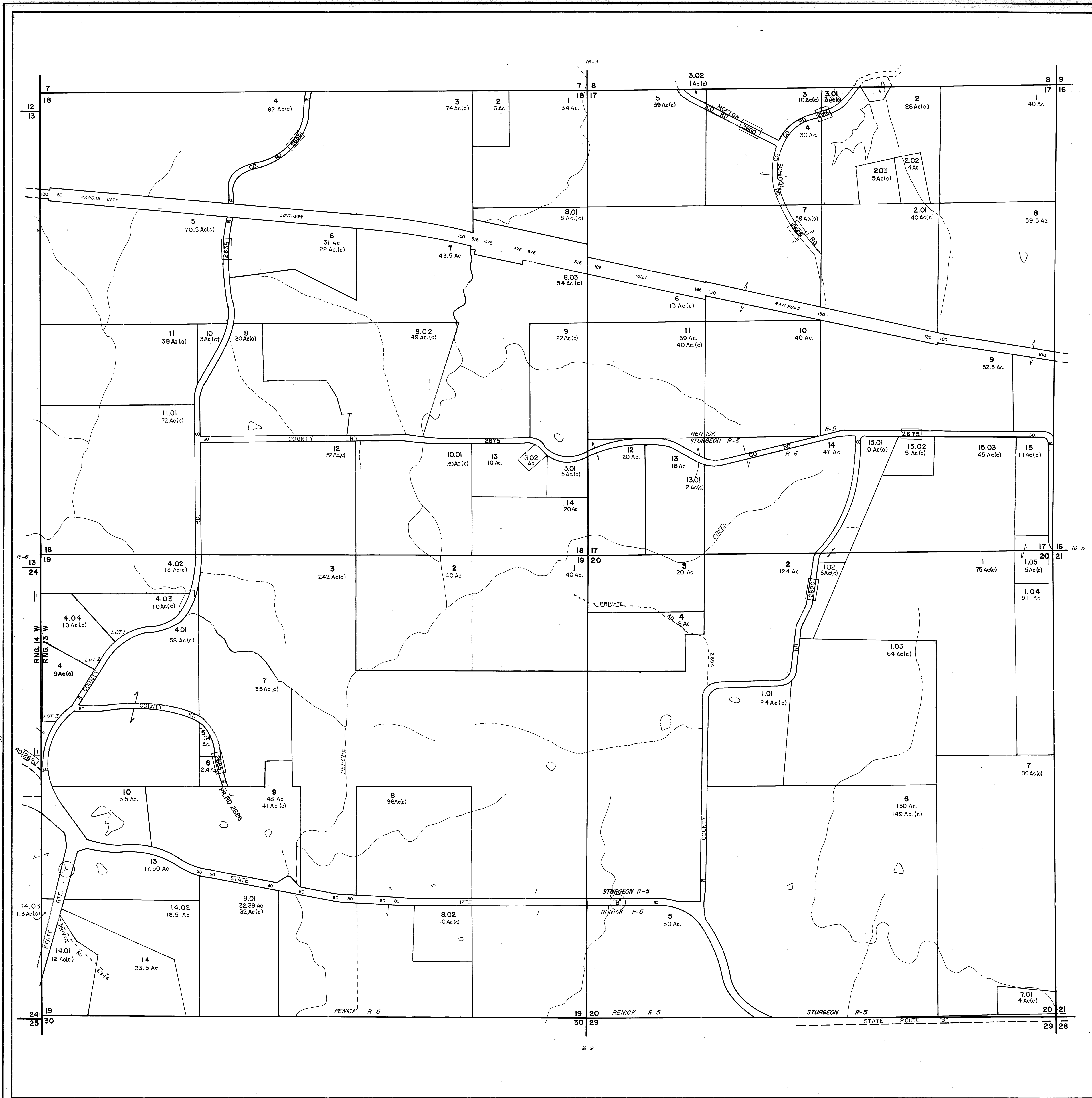
PLAN HOLD CORPORATION - IRVINE, CALIFORNIA
REORDER BY NUMBER 0794R
PRINTED EDGE OF SHEET ON THIS LINE

PLAN HOLD CORPORATION - IRVINE, CALIFORNIA
REORDER BY NUMBER 0794R
PRINTED EDGE OF SHEET ON THIS LINE

PLAN HOLD CORPORATION - IRVINE, CALIFORNIA
REORDER BY NUMBER 0794R
PRINTED EDGE OF SHEET ON THIS LINE

PLAN HOLD CORPORATION - IRVINE, CALIFORNIA
REORDER BY NUMBER 0794R
PRINTED EDGE OF SHEET ON THIS LINE

PLAN HOLD CORPORATION - IRVINE, CALIFORNIA
REORDER BY NUMBER 0794R
PRINTED EDGE OF SHEET ON THIS LINE



24
21
22
12

OWNERSHIP MAP
RANDOLPH COUNTY, MISSOURI
 PREPARED UNDER THE DIRECTION OF
STATE TAX COMMISSION OF MISSOURI
 AND
RANDOLPH COUNTY TAX ASSESSOR
 PREPARED BY
ROBINSON AND ASSOCIATES, INC.
 306 OAK AVE., SPRUCE PINE, N.C. 28777

SCALE: 1" = 400'
 DATE OF MAP: FEB. 13, 1981
 DATE OF PHOTOGRAPHY: 1978
 AERIAL PHOTO NO. 178-28-1

SUBDIVISION INDEX

SUBD. NO.	SUBDIVISION NAME	PLAT BOOK	PAGE
1	GREENWOOD SUB. OF NW 1/4 OF SEC. 19-22-13	SL 364 B	1

LEGEND

STATE LINE	---	AREA (FROM DEED)	10.5Ac.
COUNTY LINE	---	AREA (CALCULATED)	10.5Ac.(c)
CORPORATION LINE	---	DIMENSION (FROM DEED)	16.5
DISTRICT LINE	---	DIMENSION (CALCULATED)	66'(s)
ROAD R/W	---	SUBDIVISION LOT NUMBER	23
TOWNSHIP & RANGE LINES	---	PARCEL NUMBER	45
RAILROAD R/W	---	WATER	
PROPERTY LINE	---	INTERSTATE HIGHWAY	
LAND HOOK	---	U.S. HIGHWAY	
SECTION LINE	---	STATE HIGHWAY	
INTERIOR OR ORIGINAL TRACT LINE	---	COUNTY HIGHWAY	
BLOCK LIMIT (WHERE APPLICABLE)	---	ROADS, STREETS, CHURCHES, ETC. BY NAME	
		SECTION CORNERS	2 1 1 1 1 2

MAP SHEET INDEX

6	5	4	3	2	1
03	02	01			
7	8	9	10	11	12
04	05	06			
16	15	14	13		
21	22	23	24		
30	29	28	27	26	25
09	08	07			
31	32	33	34	35	36

TOWNSHIP LOCATOR

	R16W	R15W	R14W	R13W
T55N	04	03	02	01
T54N	05	06	07	08
T53N	12	11	10	9
T52N	13	14	15	16

SECTIONS 17, 18, 19, 20
TWP. 52 N. RNG. 13 W.
33-16-4
 MAP NUMBER

REVISIONS

DATE	BY	CHANGES OR ADDITIONS